

# PHONOMAX SYSTEMS

## Short Programming Manuals

## PX Series

### **PX Series Short Program Manual** **Salient Features**

- 1) FSK CLID
- 2) Real Time Clock In-Built
- 3) No Cross talk
- 4) Auto Day-Night Mode
- 5) SMDR
- 6) Paging Port
- 7) External Music
- 8) Battery Back-up
- 9) Voice Card Optional with Auto Attendant
- 10) Flexible Numbering 1 to 3 Digit Start from 1 to 5

### **Basic System Programming**

CLID on Trunk as well on Extensions are Always Enabled and to program the same. CLID FSK or DTMF Type on Trunk, is Identified Automatic on Receipt of First Two Calls

### **Tones**

- 1) Program Dial Tone -- Long On - Short off - Long On - Short Off
- 2) Acceptance Beep -- Short Beep of 300mSec and Silent Programmer in Same Program Code

## PX Series

3) Error Tone -- Medium On - Medium off -  
Medium On - Medium Off -->

Trunk No. = 60 / 61 /62 /63 or \* for All  
Ext. No. = Flexible Number of Extension

### **Password Entry**

System Dial Tone --> #6+PPPP -->  
Program Dial Tone

All Below Program Codes in two digits are  
to be dialed only when Program Dial Tone  
is Present

In case to switch from One Code to  
another, flash Twice to get Program Dial  
Tone

In case of Wrong Code Dialing and getting  
Error Tone -- Do flash & Start again from  
where Left, No dialing will get Accepted

### **Trunk Setting**

#### **Trunk Activation or De-activation -**

Default All Activated

Program Dial Tone --> 01 + Trunk No. +  
0(Off)/1(On) --> Beep

## PX Series

**Trunk Group Setting** - Default All Trunk in 0-Group

Program Dial Tone --> 02 + Trunk No. + 0(0-Group)/1(9-Group) --> Beep

### Outgoing Call Setup

**Extension Trunk Enable when Group Access Code Dialed** - Default All Trunk on all Extension Activated

Program Dial Tone --> 03 + Ext. No. + Trunk No. + 0(Disable)/1(Enable) --> Beep

**Extension Trunk Enable when Direct Access Code Dialed** - Default All Trunk on all Extension Activated

Program Dial Tone --> 04 + Ext. No. + Trunk No. + 0(Disable)/1(Enable) --> Beep

**Extension Dialing Lock** - Default All Extension Dialing is Open

Program Dial Tone --> 05 + Ext. No. + 0(Dialing Off)/1(Dialing On) --> Beep

## PX Series

**Extension Barge-in Control** - Default All Enable with Tone

Program Dial Tone --> 06 + Ext. No. +  
0(Barge-in Off)/1(Barge-in with Tone)/  
2(Barge-in without Tone) --> Beep

**Memory Number Programming** -

Default Memory Number Not Programmed  
Program Dial Tone --> 07 + LL (00-99) +  
Trunk Access Code + Telephone Number +  
Flash --> Beep

LL is Access Code 00 to 99 used while  
Dialing 700 to 799

Trunk Access Code is Trunk No. or Group  
Access Code

After Flash on getting Beep Programmer  
can continue next memory number  
programming without dialing 07 if Program  
Dial tone is absent

**Flexible Numbering Reset** - Default 10-  
17 or 10-25

Program Dial Tone --> 08 + 0(10-  
25)/1(101-116)/2(21-36)/3(30-45) -->  
Beep

## PX Series

**Flexible Numbering Setting** - Default  
10-17 or 10-25

Program Dial Tone --> 09 + Current  
Number + New Number + #

Flexible Number can be from 1-5 (Single  
Digit) or 10-59 (Two Digit) or 100-599  
(Three Digit)

But if 1 is given to Extension 10-19 or  
100-199 can not be given

Mixture of One, Two or Three Digits can be  
given.

When Extension receives Intercom Call,  
CLID will be Five Digit and first Digit will  
indicate Actual Length of the Allotted  
Number

### Incoming Call Set-up

**Incoming Call Termination** - Default  
first Port to eighth port

Program Dial Tone --> 11 + Trunk No. +  
Ext. No.1 + Ext. No.2 +..Maximum 8 or  
Flash when Extension are less--> Beep

**Incoming Call Termination Type** -  
Default Sequential

Program Dial Tone --> 12 + Trunk No. +  
0(Sequential)/1(Simultaneous) -->Beep

## PX Series

### **Extension Ring Switch Count in Sequential Mode**

Program Dial Tone --> 13 + Ext. No. + 3-9(Ring Count) -->Beep

**Exit Program Mode** - Default when Extension hangs up for more than 7 Seconds

Program Dial Tone --> 00 --> Normal Dial Tone

### **System Complete Reset**

Program Dial Tone --> 10 + # --> Normal Dial Tone (After a Delay)

# **IXP Series Short Program Manual**



## IXP Series

### **Flexible Number Setting, Display Assignment, System Reset and Verifying Flexible Number Enter Program Mode**

On Dial tone, from first three Ports only,  
Dial - #\* +1234 (Default System Password)

Listen Long On-Short off---Program Dial Tone (PDT)

**Note:** Equal On-Off is Engage Tone in case of,

- 1) Password is changed by Program Code-02
- 2) Extension is disabled for Programming by Program Code (47)
- 3) Any other Extension is in Program Mode

### **Flexible Number Assign**

While Program Dial Tone Present  
Dial - 09 (Beep) + \* +Jack Number + Flexible Number + \* - Beep

**Note:** Flexible Number can be 1 to 6 Digits using Numbers (0-9) only.

Once Getting Beep, Programmer can continue Next Jack Programming without Dialing Program Code (09) and Dialing

## IXP Series

\* +Jack Number + Flexible Number + \* -  
Beep

If 10 is given 10+N or 1 cannot be given  
On getting Rejection or Multiple Beeps and  
the Number might be allotted to any other  
Jack

### **Display Assignment**

Total Eight Serial Display can be connected  
to IXP Intercom System

Display connection requires one pair of  
Data Connection from RJ-11 of CPU card of  
Intercom System

Power Point required near display for  
power to display

Once Power is given to Display, it will show  
ID & version of Display from 01 to 16 as  
Id01-2 where ID number is followed by  
version.

Display ID & Version in New Plastic body  
Display can be set by pressing Program  
Button on Display Board.

To set Display ID, Version & Display  
Intensity long press Program button for  
three seconds & buzzer will sound. The  
version setting will blink and can be set  
from 1 to 4. Pressing program button will  
increment the version ID from 1 to 4. On

## IXP Series

getting version 2, long press program button and this shift to setting of ID and ID number will blink. Select ID by pressing program button for short duration till required ID number gets displayed. Long press program button and display intensity will show as per setting. Display intensity is from 1 to 8 and short press program button multiple times to reach desired intensity. Long press program button to exit from program mode.

Now when data pair from CPU Card is connected to Display Data Jack, Display will show Time without any Programming. In case Time is not shown, please change Polarity of Data of Display only.

While Program Dial Tone Present

Dial - 41 (Beep) + Flexible Number (or \* +Jack Number) + Display ID (1 to 8) - Beep

**Note:** Once Getting Beep, Programmer can continue Next Display Programming without Dialing Program Code (41).

In all new versions back-up is automatically taken once programmer exit programming mode for at least one minute. Please note that after

## IXP Series

programming is over don't put off system for at least three minutes.

### **Erase Program Back-up & Factory Reset**

While Program Dial Tone

Dial - 98 (Beep) + # - System Dial Tone

### **Reset System RAM & Extension Data (System Program Data will remain intact)**

While Program Dial Tone

Dial - 99 (Beep) + # - System Dial Tone

### **Identify Jack/Port & Flexible Number Assigned to extension**

To find Jack or Port number, Lift Handset dial #2\* without program password, Voice message of Jack number will be announced.

To find Flexible number, Lift Handset dial #2\* without program password, Voice message of Flexible number will be announced, if assigned.

## IXP Series

### **Verify Flexible Numbering**

User can verify all the Flexible Numbers given to Extensions without dialling them when Display is connected

To do so,

On Normal Dial Tone

Dial--\*+6+# -- Display will Show Version & Built of System i.e. 2b02

Dial Flexible Number ---> Display will show Jack Number & Group

Dial \*+Jack Number ---> Display will show Flexible Number of Jack

Dial # will Toggle between Jack Number & Flexible Number

Dial \*\* will show next sequential Jack Number as per Current View

This way Programmer can verify All Numbers in couple of minutes.

# **NX Series Short Program Manual**

## NX Series

Information given here is private and confidential and is not for Distribution.

No other than PHONOMAX Hybrid or Proprietary Telephone should be connected to Hybrid Ports. Any Damages due to that will be sole responsibility of the User.

The Hybrid Phones from Phonomax will be available without any Time Binding to the Company.

Please read the detailed manual thoroughly before installing the System.

### **FEATURE GUIDE**

#### **SYSTEM & MANAGER PROGRAMMING MODES**

PBX system parameters can be programmed from any Single Line Telephone (SLT) instrument.

**The system configuration reset can be done by software only by dialling ##\*123456789 from SLT or Hybrid Phone**

**Enter Programming Mode from SLT only.**

**Password Entry**

**#\*1234**

Listen Program Dial Tone (Intermittent Break in Tone)

## NX Series

In Presence of Program Dial Tone programmer can enter Program Code.

Once the program code is entered Programmer gets acceptance beep for valid Program Code.

The parameters for that program code are to be entered once the acceptance beep is given

Once Parameter is entered and programming done for entered code programmer will get Program Dial Tone for doing to next program.

When wrong Program Entry or Program Code or Parameter is entered engage tone is heard and programmer need to do flash to get Program Dial Tone and no need to re-enter programming password.

EPort is Extension Number assigned to Port of the System.

CPort is Trunk Port of the System 60/61 for 208 to 60/61/62 for 308 & 60/61/62/63 for 416.

Program Dial Tone -- PDT

Acceptance Beep -- B



## NX Series

### Program Codes

#### Date and Time Program

PDT + 00 (B) + YY + MM + DD (B) + HH + MN (PDT)

HH =Hours 0-23

#### Global Memory Program

PDT + 01 (B) + MM (B) + Trunk (B) + NNNNNNNN....+ Flash--PDT

MM = Memory Location

Trunk = 0 or 9 or Direct Access Code (60 to 63)

NN... = Telephone Number

#### Extension Flexi Number Auto Assignment

PDT + 07 (B) + 0/1/2/3 -- PDT

0 = Extension are 10, 11, 12....25

1 = Extension are 101, 102, 103....116

2 = Extension are 21, 22, 23....36

3 = Extension are 30, 31, 32....45

(Default Extension Number = 10, 11, 12....25)

## NX Series

### **Extension Flexi Number Assignment**

PDT + 09 (B) + Old Ext (B) + New Ext --  
PDT

Note: New Number should start with 1-5  
and can be single, two or three digits or  
combination.

### **Extension Ring Switch Programming**

PDT + 131 (B) + EXT (B) + R (3-9) --- PDT

### **Caller ID Service Waiting Period Programming**

PDT + 160 (B) + T (0-4) --- PDT

0/1/2/3/4 = 0 Sec/1.7 Sec/3.3 Sec/4.9  
Sec/6.5 Sec

Wait for Caller ID from Exchange after  
which Call is terminated

### **Trunk Line Disable Programming**

PDT + 60 (B) + Trunk / \* + 1/0 --- PDT

Trunk = 60/61/62/63 & \* =All

(Default Enable)

## NX Series

### **Trunk Access Group Assign**

PDT + 62 (B) + Trunk / \* + 0/1/2 -- PDT

Trunk = 60/61/62/63 & \*=All

0 = No Group / 1 = Group '0' / 2 = Group '9'

(Default All Group '0')

**Note:** This group lines are also used for Global Memory Dialling

### **Trunk Line Termination Day Mode Ringing Extension Assignment**

PDT + 63 (B) + Trunk / \* + Ext + Ext +...

(Max. 8 -Ext) + Flash --- PDT

Trunk = 60/61/62/63 & \*=All

(Default 1<sup>st</sup> to 8<sup>th</sup> Extension in Sequence)

### **Trunk Line Termination Type - Day Mode Assignment**

PDT + 64 (B) + Trunk / \* + T (1-6) -- PDT

Trunk = 60/61/62/63 & \*=All

1 - Sequential / 2 - Simultaneous / 3 - Staircase

4 / 5/ 6 With DISA as above respectively.

(Default All Sequential Termination)

## NX Series

### **Trunk line Telephone number Assignment Programming**

PDT + 66 (B) + Trunk + NNNNN (Telephone Number - max. 12 Digits) – Flash -- PDT  
Trunk = 60/61/62/63

### **Extension 0 - Access Trunk Line Day Mode Enable / Disable Programming**

PDT + 71 (B) + Ext/\* + Trunk/\* + 1/0 ---  
PDT

\* = All Ext or Trunk where ever applied  
Trunk = 60/61/62/63 as per System  
0 = Disable / 1 = Enable  
(Default All Allowed)

### **Extension Trunk line Direct Access Day Mode Activation**

PDT + 72 (B) + Ext/\* + Trunk/\* + 1/0 ---  
PDT

\* = All Ext or Trunk where ever applied  
Trunk = 60/61/62/63 as per System  
0 = Disable / 1 = Enable  
(Default All Allowed)

## NX Series

### **Extension Class of Service Day Mode**

PDT + 73(B) + Ext/\* + 0/1/2/3 --- PDT

0 = All Allowed

3 = Only Intercom Allowed

(Default All Allowed)

### **Exit from Programming Mode**

Program Dial Tone + 90 -- System Normal Dial Tone

**Note:** After Programming over System will Back-up all Programmed data & Run LED will be on intermittently.

### **Data Reset Memory & Back-up**

PDT + 98 (B) + # -- Blank and System Normal Dial Tone

**Note:** Program will get to factory default.

### **Data Reset Memory Only**

PDT + 99 (B) + # -- Blank and System Normal Dial Tone

**Note:** Program will get restored from Back-up automatically.

# **GX Series Short Program Manual**

## Programming Manual

### Enter Programming Mode

Programming can be done by programming enabled extensions only. All extensions can do programming in Default setting. The program capability can be programmed by Code-141

### Password Entry

#\*1234

Listen Program Dial Tone (Intermittent Break in Tone)

In Presence of Program Dial Tone programmer can enter Program Code.

Once the program code is entered Programmer gets acceptance beep for valid Program Code.

The parameters for that program code are to be entered once the acceptance beep is given, once parameter is entered and programming can be done for entered code, programmer will get program dial tone for doing the next program.

When wrong Program Entry or Program Code or Parameter is entered engage tone is heard and programmer need to do flash to get program dial tone and no need to re-enter programming password.

## GX Series

EPort is Physical port number as per slot of the System (100-291) and EFlexi is flexible number assigned to extension port.

EPort is as per slot of the card

T is Trunk Port of the System is 1 to 8, as per trunk card attached to the system.

RG is Ringing Group 1 to 6.

EFlexi is Flexible number assigned to EPort or CPort or RGroup or Feature Code

EFlexi can be assigned to all Extensions, all Trunks, both Trunk groups, Redial, Call Pick-up, Panic, all Ringing groups access codes.

EFlexi can be 1 to 6 digits all numeric with mixture also. If 10 is assigned 10nn... cannot be assigned. EFlexi starting \* cannot be assigned to Extension or Trunk. EFlexi cannot be assigned to any EPort/CPort where Slot is empty.



## GX Series

Slot wise Jack/port Numbers are below

<b>Slot</b>	<b>Port</b>
Slot-01	100 - 115
Slot-02	116 - 131
Slot-03	132 - 147
Slot-04	148 - 163
Slot-05	164 - 179
Slot-06	180 - 195
Slot-07	196 - 211
Slot-08	212 - 227
Slot-09	228 - 243
Slot-10	244 - 259
Slot-11	260 - 275
Slot-12	276 - 291

## GX Series

### **Program Codes**

#### **Date and Time Program**

Program Dial Tone + 00 -- Acceptance Beep  
Dial YY+MM (Month 01-12) + DD (Day 01-31)

Acceptance Beep +HH+MN -- Program Dial Tone

Where,

YY = Year 00-99

MM= Month 01-12 for Jan to Dec

DD =Day 01-31 (Date)

HH =Hours 00-23

MN =Minutes 00-59

(Default Programmed for Date / Time)

#### **Global Memory Program**

Program Dial Tone + 01 -- Acceptance Beep  
Dial \* --Program Dial Tone (Reset Entire Memory)

Dial MM + T + NNNNNNNN....+ Flash--  
Program Dial Tone

Dial MM + \* -- Program Dial Tone (Reset  
Memory Location @ MM)

Where,

MM = Memory Location (00—99 used by  
dialing #700 to #799)

NN... = Telephone Number up to 30 digits

T = 0 or 9 is for group-1/2 respectively

## GX Series

T = 1-8 is Direct Access Code as per trunk available

(Default Not Programmed)

### **Ports Flexi Number Auto Assignment**

Program Dial Tone + 07 -- Acceptance Beep

Dial 0/1/2/3 -- Program Dial Tone

Where,

0 = No Numbers are assigned, Factory default

1 = Extension are 10, 11, 12...up to 59 of present Extensions

Trunk Direct Access Code is 61, 62...up to 68 for Present Trunk Lines

2 = Extension are 20, 21, 22...up to 69 of present Extensions

Trunk Direct Access Code is 11, 12...up to 18 for Present Trunk Lines

3 = Extension are 100, 101, 102...up to present all Extensions

Trunk Direct Access Code is 61, 62...up to 68 for Present Trunk Lines

**Note:** For 1/2/3 --> Redial is \*, Trunk Group-1 is 0, Call Pick-up is 8, Ring Group-1 is 7 with first four Extensions.

(Default No Numbers are assigned)

## GX Series

### **Ports EFlexi Reset**

Program Dial Tone + 08 -- Acceptance Beep

Dial EFlexi -- Program Dial Tone

With this EFlexi assigned to any port or Feature Access code and it will get erased.

### **Extension Flexi Number Assignment**

Program Dial Tone + 09 -- Acceptance Beep

Dial EPort + EFlexi + # (For digits < 6) --

Program Dial Tone

Dial EPort + # (Erase number assigned to EPort) -- Program Dial Tone

EFlexi can be 1 to 6 digits, when digits are less than 6 dial # to assign

(Default check program code-07)

### **Default Number Assign Trunk Group-1**

Program Dial Tone + 20 -- Acceptance Beep

Dial EFlexi (+ #) -- Program Dial Tone

Dial # (Erase number assigned to Trunk Group-1) -- Program Dial Tone

EFlexi can be 1 to 6 digits, when digits are less than 6, dial # to assign

(Default check program code-07)

## GX Series

### **Default Number Assign Trunk 1-8**

Program Dial Tone + 21+T -- Acceptance Beep

Dial EFlexi (+ #) -- Program Dial Tone

Dial # (Erase number assigned to Trunk) -- Program Dial Tone

EFlexi can be 1 to 6 digits, when digits are less than 6, dial # to assign

T is Trunk Number 1 to 8 as per configuration

(Default check program code-07)

### **Default Number Assign Ringing Group 1-6**

Program Dial Tone + 22 + RG -- Acceptance Beep

Dial EFlexi (+ #) -- Program Dial Tone

Dial # (Erase number assigned to Ringing Group) -- Program Dial Tone

EFlexi can be 1 to 6 digits, when digits are less than 6, dial # to assign

RG is Ringing Group 1 to 6

(Default check program code-07)

## GX Series

### **Default Number Assign Redial**

Program Dial Tone + 23 -- Acceptance Beep  
Dial EFlexi (+ #) -- Program Dial Tone  
Dial # (Erase number assigned to Redial  
Access Code) -- Program Dial Tone  
EFlexi can be 1 to 6 digits, when digits are  
less than 6, dial # to assign  
(Default check program code-07)

### **Default Number Assign Call Pick-up**

Program Dial Tone + 24 -- Acceptance Beep  
Dial EFlexi (+ #) -- Program Dial Tone  
Dial # (Erase number assigned to Call Pick-  
up) -- Program Dial Tone  
EFlexi can be 1 to 6 digits, when digits are  
less than 6, dial # to assign  
(Default check program code-07)

### **Default Number Assign Trunk Group-2**

Program Dial Tone + 29 -- Acceptance Beep  
Dial EFlexi (+ #) -- Program Dial Tone  
Dial # (Erase number assigned to Trunk  
Group-2) -- Program Dial Tone  
EFlexi can be 1 to 6 digits, when digits are  
less than 6, dial # to assign  
(Default check program code-07)

## GX Series

### **Internal CLID 5 Digits Activation Programming**

Program Dial Tone + 182 -- Acceptance Beep

Dial 0/1 -- Program Dial Tone

Where,

0 = Internal CLID is actual

1 = Internal CLID is five digits with preceding '0'

(Default Five Digits)

### **Port Display Assign**

Program Dial Tone + 41 -- Acceptance Beep

Dial DI + \*EPort/EFlexi / \*\* -- Program Dial Tone

Where,

DI is Display ID = 01 to 16

EFlexi = Extension Number or Ringing Group Access Code

EPort = Extension Port Number

\*\* = Erase any Assignment

(Default Not Programmed)

## GX Series

### **Ringing Group Extensions Assign**

Program Dial Tone + 50 + RG -- Acceptance Beep

Dial \*EPort/EFlexi -1 (Acceptance Beep) + \*EPort/EFlexi-2 (Acceptance Beep) + ... up to eight Extensions or Flash for less -- Program Dial Tone

Where,

RG is Ringing Group ID from 1 to 6

EPort = Extension Port Number

EFlexi = Extension Flexible Number  
(Default check program code-07)

### **Ringing Group Day Termination**

Program Dial Tone + 51 + RG -- Acceptance Beep

Where RG is Ringing Group ID from 1 to 6  
Dial 1/2/3 -- Program Dial Tone

Where,

1 is Sequential Termination in Day mode for Ringing Group

2 is Simultaneous Termination in Day mode for Ringing Group

3 is Staircase Termination in Day mode for Ringing Group

(Default Sequential)



## GX Series

### **Extension Ring Switch Programming**

Program Dial Tone + 131 -- Acceptance Beep

Dial \*EPort / \*\* / EFlexi + R -- Program Dial Tone

Where,

EPort = Extension Port Number

\*\* = All Extensions

EFlexi = Extension Flexible Number

R = 3 to 9, this used in Sequential Mode for Ring Shift Count to Next Extension.

(Default 6 Rings)

### **Trunk Line Disable Programming**

Program Dial Tone + 60 -- Acceptance Beep

Dial T + 1/0 --- Program Dial Tone

Where,

T = 1-8 Trunk Port ID as per System Configuration

T = 0 All Trunk Ports

1 = Enable

0 = Disable

(Default Enable)

## GX Series

### **Trunk Access Group Assign**

Program Dial Tone + 62 -- Acceptance Beep

Dial T + 0/1/2 -- Program Dial Tone

Where,

T = 1-8 Trunk Port ID as per System Configuration

T = 0 All Trunk Ports

0 = No Group

1 = Group '1'

2 = Group '2'

(Default All Group '1')

**Note:** This group lines are also used for Global Memory Dialling

First & second group access code has to be assigned as per program code 20 & 29 respectively.

Trunk direct access code has to be assigned as per program code 21

### **Trunk Line Termination Day Mode Ringing Extension Assignment**

Program Dial Tone + 63 -- Acceptance Beep

Dial T + \*EPort/EFlexi -- Program Dial Tone

Where,

T = 1-8 Trunk Port ID as per System Configuration

T = 0 All Trunk Ports

EPort is Extension Port Number

## GX Series

EFlexi is Extension or Ringing Group where call will terminate on dialling that number (Default first EPort)

### **Trunk line Telephone number Assignment**

Program Dial Tone + 66 -- Acceptance Beep  
Dial T + NNNNN (Telephone Number - max. 12 Digits) -- Flash

Where,

T = 1-8 Trunk Port ID as per System Configuration

NNNNN = Telephone Number of trunk line - max. 12 Digits

(Default not programmed & 'Phonomax PBX' will be displayed)

### **Extension Group Trunk Access Day Mode**

Program Dial Tone + 71 -- Acceptance Beep  
Dial \*EPort/EFlexi /\*\* + T + 1/0 ---  
Program Dial Tone

Where,

EPort is Extension Port Number

EFlexi is flexible number assigned to extension

\*\* is all extension

## GX Series

T = 1-8 Trunk Port ID as per System Configuration

T = 0 All Trunk Ports

0 = Disable Access

1 = Enable Access

(Default All Allowed)

**Note:** This Access is applicable for both groups, if activated

### **Extension Trunk line Direct Access Day Mode**

Program Dial Tone + 72 -- Acceptance Beep  
Dial \*EPort/EFlexi /\*\* + T + 1/0 ---  
Program Dial Tone

Where,

EPort is Extension Port Number

EFlexi is flexible number assigned to extension

\*\* is all extension

T = 1-8 Trunk Port ID as per System Configuration

T = 0 All Trunk Ports

0 = Disable Access

1 = Enable Access

(Default All Allowed)

## GX Series

### **Extension Class of Service Day Mode**

Program Dial Tone + 73 -- Acceptance Beep  
Dial \*EPort/EFlexi /\*\* + 0/1/2/3 ---  
Program Dial Tone

Where,

EPort is Extension Port Number

EFlexi is flexible number assigned to extension

\*\* is all extension

0 = All Allowed

1 = Class of Service - 1 Effective (Allowed All 20/Denied First 10)

2 = Class of Service - 2 Effective (Allowed First 10/Denied All 20)

3 = Only Intercom Allowed  
(Default All Allowed)

### **Exit from Programming Mode**

Program Dial Tone + 90 -- System Normal Dial Tone

**Note:** After Programming over System will Back-up all Programmed data & Run LED will be on intermittently. Do not switch off system till run LED runs normally.

## GX Series

### **Data Reset Memory & Back-up**

Program Dial Tone + 98 -- Acceptance Beep  
Dial # -- Blank and System Normal Dial  
Tone

**Note:** Program will get to factory default.

### **Data Reset Memory Only**

Program Dial Tone + 99 -- Acceptance Beep  
Dial # -- Blank and System Normal Dial  
Tone

**Note:** Program will get restored from Back-up automatically

### **Identify Jack/Port & Flexible Number Assigned to extension**

To find Jack or Port number, Lift Handset dial #2\* without program password, Voice message of Jack number will be announced.

To find Flexible number, Lift Handset dial #2\* without program password, Voice message of Flexible number will be announced, if assigned.

## GX Series

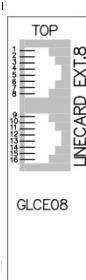
<b>Program Type</b>	<b>Code</b>
Program Entry	#*
System Data Reset - Both RAM/E2P	98
System Data Reset - RAM only	99
Date & Time Entry	00
Memory Programming	01
Flexible Default Setting	07
Flexible Number Erase	08
Flexible Number Program	09
Port Ring Switch Sequential	131
Internal CLID 5 Digits	182
Default Number Assign-Group-1	20
Default Number Assign-Trunk 1-8	21T
Default Number Assign-RGRP 1-6	22R
Default Number Assign-Redial/FT	23
Default Number Assign-Pick-up	24
Default Number Assign-Group-2	29
Port Display Assign-01-16	41+ID
Ringing Group Assign-1-6	50R
Ringing Group Day Termination-1	51R
Trunk Activation	60T
Trunk Group Assign	62T
Trunk Incoming Day	63T
Trunk Telephone Number	66T
Extension Group Trunk Access Day	71
Extension Direct Trunk Access Day	72
Extension COS Day	73

# GX Series

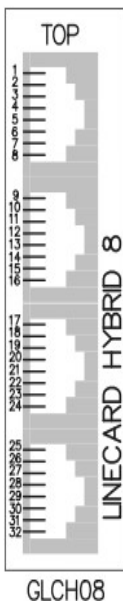
Pins	Port
1-2	EXT-1
3-4	EXT-2
5-6	EXT-3
7-8	EXT-4
9-10	EXT-5
11-12	EXT-6
13-14	LINE-1
15-16	LINE-2



Pins	Port
1-2	EXT-1
3-4	EXT-2
5-6	EXT-3
7-8	EXT-4
9-10	EXT-5
11-12	EXT-6
13-14	EXT-7
15-16	EXT-8



Pins	Port
4-5	EXT-1
3-6	EXT-2
2-7	DATA-1
1-8	DATA-2
12-13	EXT-3
11-14	EXT-4
10-15	DATA-3
9-16	DATA-4
20-21	EXT-5
19-22	EXT-6
18-23	DATA-5
17-24	DATA-6
28-29	EXT-7
27-30	EXT-8
26-31	DATA-7
25-32	DATA-9



Pins	Port
1-2	EXT-1
3-4	EXT-2
5-6	EXT-3
7-8	EXT-4
9-10	EXT-5
11-12	EXT-6
13-14	EXT-7
15-16	EXT-8
17-18	EXT-9
19-20	EXT-10
21-22	EXT-11
23-24	EXT-12
25-26	EXT-13
27-28	EXT-14
29-30	EXT-15
31-32	EXT-16

